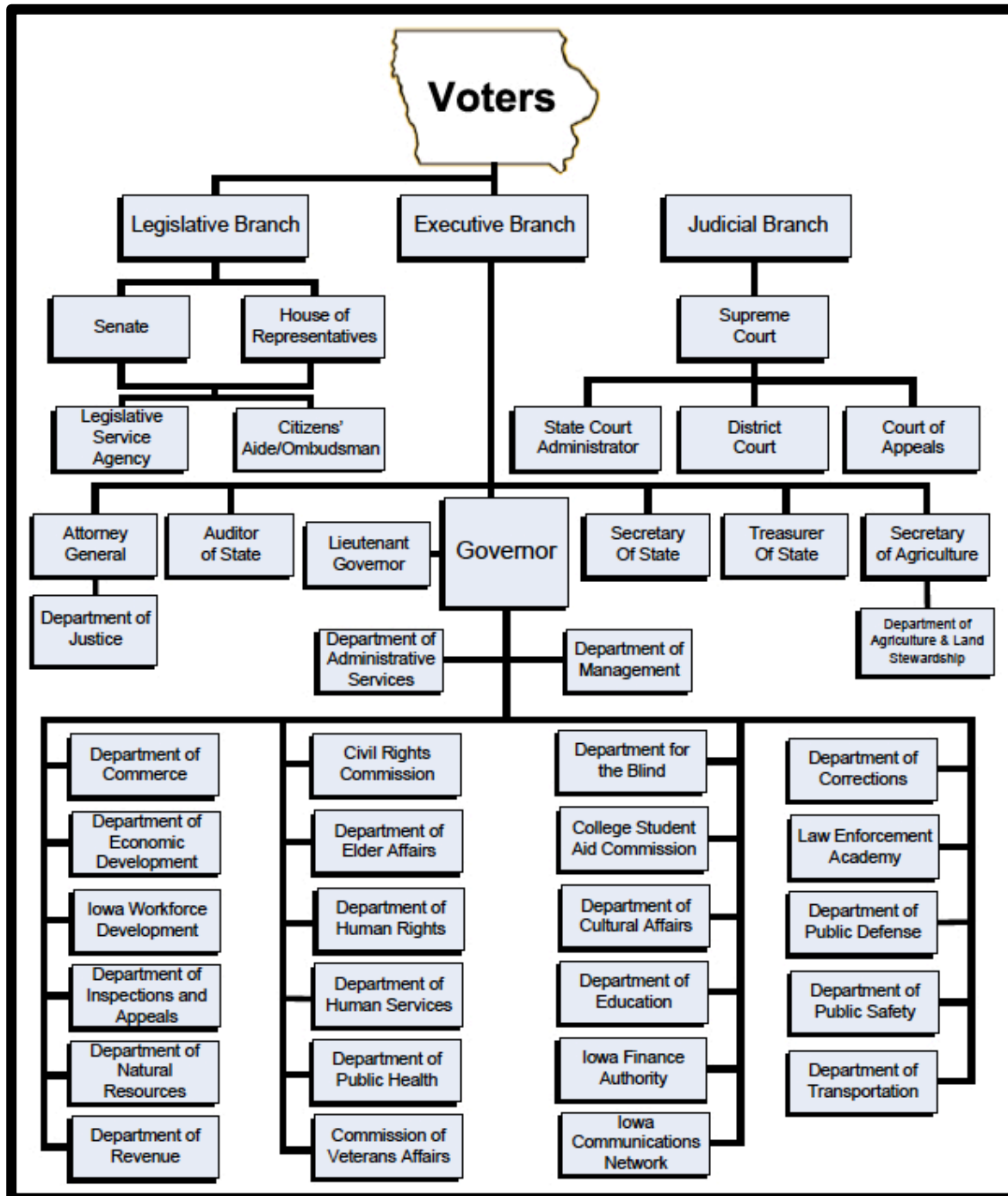


# State of Iowa Organizational Chart

<http://phonebook.iowa.gov/doc/StateOrganizationalStructure.pdf>

Here is a simple organizational chart for the state of Iowa showing the three branches of Government (Legislative, Executive, and judicial).

(This chart is not available in Braille, however the description should begin to explain the three branches of government and us – the voters of Iowa.)



At the top of the chart, is a map of Iowa with the word “Voters” inside. That reminds us that our leaders of state government are elected, and are subject to being voted out if enough Iowans don’t like what they are doing. Listed below (and on the Organizational Chart itself) are only some of the departments, offices and commissions that are a part of state government.

# **VOTERS of IOWA**

## **LEGISLATIVE BRANCH:**

- Iowa Senate
- Iowa House of Representatives
  - Legislative Service Agency
  - Citizens’ Aide/Ombudsman

## **JUDICIAL BRANCH:**

- Iowa Supreme Court
  - State Court Administrator
  - District Court
  - Court of Appeals

## **EXECUTIVE BRANCH:**

- |   |                                 |
|---|---------------------------------|
| Governor <ul style="list-style-type: none"><li>- Department of Management</li><li>- Department of Administrative Services</li></ul> | Department of Human Services    |
| Lieutenant Governor   | Department of Public Health     |
| State Treasurer   | Commission of Veterans Affairs  |
| Secretary of State  | Department for the Blind        |
| State Auditor   | Iowa Civil Rights Commission    |
| Attorney General <ul style="list-style-type: none"><li>- Department of Justice</li></ul>  | Department of Elder Affairs     |
| Secretary of Agriculture <ul style="list-style-type: none"><li>- Department of Agriculture &amp; Land Stewardship</li></ul>         | Department of Human Rights      |
| Department of Commerce  | Department of Natural Resources |
| Department of Economic Development  | College Student Aid Commission  |
| Iowa Workforce Development  | Department of Cultural Affairs  |
| Department of Inspections and Appeals   | Department of Education         |
|   | Iowa Communications Network     |
|   | Department of Corrections       |
|   | Law Enforcement Academy         |
|   | Department of Public Defense    |
|   | Department of Public Safety     |
|   | Department of Transportation    |
|   | Iowa Finance Authority          |
|   | Department of Revenue           |